



henry&hymas

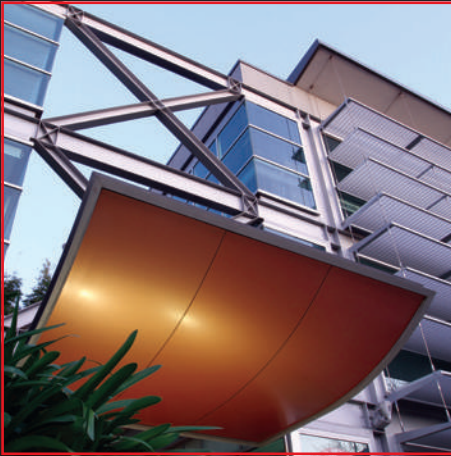


*buildings
infrastructure
assets
strata*



community
commercial
office
retail
heritage

> buildings



roads & paving
drainage
plumbing
utilities
transport

< infrastructure



**Henry & Hymas
are leaders
in remedial
engineering &
technologies.**

*Henry & Hymas
provide honest,
impartial and practical
advice to rectify
building damage
caused by water leaks,
concrete spalling,
materials dilapidation
and other impacts of
aging assets.*

units
apartments
medium density
residential
infill

> strata



carparks
property
retail
age care facilities
precincts

^ assets

relevant

*Our site inspection
teams work with strata,
asset, building and
facility managers to
ensure utility and
safety of assets
are delivered*

responsive

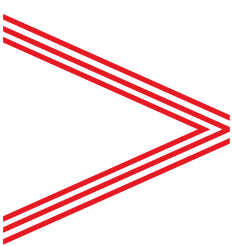
*Our teams are skilled,
ultra-responsive,
thorough and efficient.*

experienced

*Henry & Hymas
has a reputation for
excellence, integrity
and reliability.*

credible

*Our experience spans
over 30 years in the
Australian design and
construction market.*



**facade, fabric &
finishes**

- structural inspections
- deterioration and integrity
- risk, danger & safety assessment
- make good recommendations
- design & documentation
- project management
- reporting

remedial / forensic

- root cause investigation
- water leaks and waterproofing
- cracking & spalling
- dilapidation & corrosion
- sampling & lab analysis
- repair and rectification options
- design and documentation
- project management
- reporting

building assessment

- building structures
- foundation & movement
- make good recommendations
- building services
- building compliance
- disability access
- due diligence
- reporting

**asset & facility
management**

- auditing & condition reports
- database management
- risk assessment
- prioritisation
- capital costing



H&H consulting engineers provide cost effective building investigations & remedial engineering solutions for asset, strata & building managers.

Our services extend to project management & supervision of remediation.

our clients

Great work can only come from great partnerships. Here's just a few of our loyal clients:



Global-Mark.com.au®



Global-Mark.com.au®



Global-Mark.com.au®

- Brookfield's Global Integrated Solutions (BGIS)
- City of Sydney
- PRD National
- Certified Strata Management
- Strata Partners
- AMP Capital
- Net Strata
- Johnson Controls
- NSW Strata Management
- Defence Housing Australia
- Coles
- Woolworths
- Body Corporate Services
- ISS Management
- Jones Lang LaSalle
- Defence Housing Australia
- North Harbour Strata
- Clisdell's Strata
- Alldis & Cox (Coogee) Pty Ltd



henry&hymas

New South Wales

Level 5
79 Victoria Avenue
Chatswood
New South Wales 2067
Telephone
+61 2 9417 8400

Queensland

Unit 2
30 Argyle Street
Albion
Queensland 4010
Telephone
+61 7 3262 7440

"I have utilised the services of Henry & Hymas Consulting Engineers for many years and can attest to their exceptionally high standard of work and professional integrity. Their knowledge of all matters pertaining to Strata Management and Owners Corporation's responsibilities are extremely beneficial in this line of work. I have always found the staff to be helpful and co-operative in any of the work that they have been asked to carry out."

***Rob Bartlett Senior Strata Manager
PRD Nationwide Norwest***

"I have had the privilege of working with engineers from Henry & Hymas Engineers for the past 12 years. Their level of service and expertise in the area of structural engineering in strata related buildings has been of a high quality and standard."

***Dan Aukusitino Director
Certified Strata Management***

Strata

Chris Pselletes
Senior Structural/Remedial Engineer
Mobile
0405 431 995
Email
chrisp@hhconsult.com.au

Terry McGibbon

Principal
Mobile
0409 060 288
Email
tmcgibbon@hhconsult.com.au